

PRE-UNI NEW COLLEGE

Burwood Office: 279 Burwood Hwy Burwood East VIC 3151 PH: 8838 2990
Email: admin@newcollegevic.com.au Homepage: newcollegevic.com.au

Dear Year 4 (**Year 5 in 2021**) Parents,

The 2021 Term 1 will commence on **Saturday, 23rd January**.

Year 5 Term 1 courses are structured to accommodate the high academic standards expected of students for their Selective High School Placement Test in 2022.

Year 5 WEMG lesson time will be **increased to 4 hours** to build a solid foundation and have the advantage of getting ahead.

Please check the new Year 5 course timetable below.

Year 5 Term 1 Course Timetable and Class Location

Course	Session	Class Time	Class Location
Standard WEMG Course	Saturday MC	8:30am – 12:45pm	Burwood
	Saturday AC	1:20pm – 5:35pm	
	Friday	4:20pm – 8:35pm	
Selective Prime Course (SPC)	Sunday MC	9:15am – 12:25pm	Burwood
C/Writing	Wednesday	5:00pm – 7:40pm	Strathfield Head Office

- Due to the limited capacity in each class, attending another class to make up the missed class will not be allowed.
- All class activities will be in line with NSW Health guidelines as applicable and follow good hygiene practices including strict drop off & pick up procedures, limitation of class size, regular handwashing and continued on-site cleaning and sensitisation. Please find more information on Page 5.



SINCE 1992

What's On

28 November – 4 December
Term tests period (Online)

Saturday, 5 December, 5PM
Summer & Term 1 WEMG Full Term
Early Bird Discount offer ends

Sunday, 13 December 2020
Term 4 ends

4 – 15 January 2021
Summer WEMG Course (10 days)

Saturday, 23 January 2021
Term 1 WEMG, SPC begins

Tuesday, 26 January 2021
Australia Day – NO CLASS

Thursday, 27 January 2021
Creative Writing course begins

Don't have your own Cyberschool account yet?

Go to the Cyberschool website and register for its online services:

- WEMG Module Answers
- WEMG Video Lessons
- Special Online Quiz (S.O.Q)
- Term test review

All Cyberschool online services are available during the normal term course period only.

Year 5 WEMG Course

Year 5 WEMG course will commence on **Saturday, 25th January**. This will require a significant commitment of **4 hours** module work each week in Writing, English, Maths and General Ability due to the nature of the advanced curriculum. In addition to having the advantage of getting ahead, WEMG course will help students build a solid foundation for the selective school placement tests and the independent school scholarship tests.

- The writing module teaches students the most efficient ways in organising writing structure with a focus on developing critical thinking and reasoning skills.
- English lesson will focus on reading skills and practising reading comprehension and multiple-choice questions.
- Mathematics lessons are essential for students to thoroughly understand mathematical theories, principles and formulas to solve problems.
- General Ability lesson covers a variety of practical, challenging and mind-stimulating questions including verbal and non-verbal reasoning.

Year 5 Term 1 WEMG Course – Class Timetable

WEMG Session	Class Time	Class Location*
Saturday MC	8:30am – 12:45pm	Burwood
Saturday AC	1:20pm – 5:35pm	
Friday	4:20pm – 8:35pm	Burwood

Year 5 Term 1 WEMG Course – Fee Schedule

Course Name	Session	Starting Date	Tuition Fee per week	No. of weeks	Material Fee	Total	Full Term Early Bird Special Offer* (by 5-Dec-20)	Full Term Enrolment Offer** (by 29-Jan-21)
Standard WEMG Course	Saturday	23-Jan	\$70	10	\$ 85	\$ 785	\$ 715	\$ 750
	Friday	29-Jan	\$70	9	\$ 85	\$ 715	\$ 645	\$ 680
Cyber WEMG	Online	\$ 535 for 10 modules including material fee (No discount offer)						

- **Early Bird Discount Offer*** prices are valid for **full** term advance payments by **5pm, 5th December 2020**.
- **Full Term Enrolment Offer**** prices are valid for **full** term advance payments by **8pm, 29th January 2021**.
- **Additional 1.02% surcharge** will apply to all credit card payments. We only accept VISA and Master Card.
- **Material delivery fee:** When parents wish to receive their child's WEMG materials by post, **additional delivery fee** will be charged – **\$15 per set per student**.

Selective Prime Course (SPC)

Year 5 Term 1 **Selective Prime Course (SPC)** will commence on **Saturday, 23rd January**.

The SPC is a special preparation course designed to maximise student performance in the Selective Trial Test Course (STTC) from Term 2. Each week, different selective school exam question types are covered and students receive instruction on the best strategies for answering each style of question. Teachers provide examples and teach efficient and effective techniques for interpreting questions and working towards the correct solutions. The course will also cover the following new critical thinking and problem-solving skills topics:

- Analysing arguments
- Applying principles
- Making conclusions
- Identifying strengths/weaknesses
- Identifying assumption
- Arithmetic operations and shapes
- Graph, number concepts
- Quantities
- Space and spatial reasoning
- Tables

For more information about SPC & STTC, please read the **2021–2022 STTC newsletter**.

Year 5 Term 1 Selective Prime Course (SPC) – Class Timetable

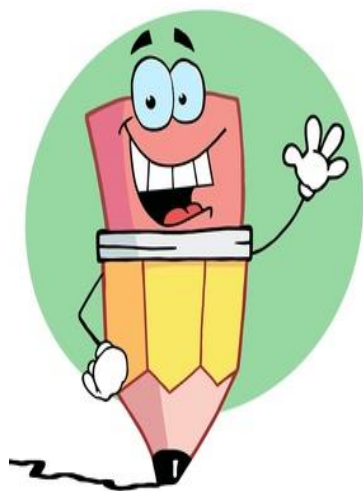
Course Name	Session	Class Time	Class Location
Selective Prime Course (SPC)	Sunday AM	9:15am – 12:25pm	Burwood
	Sunday PM	TBD	

Year 5 Term 1 Selective Prime Course (SPC) – Fee Schedule

SPC Session	Starting Date	Finishing Date	Tuition Fee per week	No. of weeks	Total Fee	Special D/C price*
Saturday	23-January	27-March	\$65	10	\$ 650	\$ 550
Sunday	24-January	28-March	\$65	10	\$ 650	\$ 550

- **Special D/C price* offer** is available **only** to the students who enrol in **both** full term SPC and full term Year 5 WEMG course together. This price is for the SPC fee only and does **not** include the WEMG course fee.
- Additional 1.02% surcharge will apply to credit card payments. We only accept VISA and Master Card.

Creative Writing Course (Thursday)



Year 5 Thursday Creative Writing Course will support students' development of technical and creative writing skills. It will cover areas including grammar, spelling and punctuation that pertain to specific text types as is required in the children's current English Curriculum.

This course will assist children to develop their narrative, descriptive, persuasive and explanatory writing skills so they can become proficient writers across all key learning areas.

The aim of this course is to target students' individual needs in writing so they can become more confident, capable and proficient writers.

It will assist students with their individual performance in all written tasks in the classroom as well as formalised tests such as NAPLAN, the Selective High School Placement Test and ICAS Assessments.



"Registered course for NSW Creative Kids voucher"

Year 5 Term 1 Creative Writing Course – Class Timetable

Course Name	Session	Class Time	Class Location
Creative Writing	Thursday	4:30pm – 6:00pm	Burwood

Year 5 Term 1 Creative Writing Course – Fee Schedule

Course Name	Session	Starting Date	Tuition Fee per week	No. of weeks	Material Fee	Total	Full Term Early Bird Special Offer* (by 5-Dec-20)	Full Term Enrolment Offer** (by 29-Jan-21)
Creative Writing	Thursday	28-Jan	\$44	10	Inclusive	\$440	\$400	\$420

- **Early Bird Discount Offer*** prices are valid for **full** term advance payments by **5pm, 5th December 2020**.
- **Full Term Enrolment Offer**** prices are valid for **full** term advance payments by **8pm, 29th January 2021**.
- **Additional 1.02% surcharge** will apply to all credit card payments. We only accept VISA and Master Card.

HELP STOP THE SPREAD COVID-19 AND STAY HEALTHY

- Cover your coughs and sneezes with your arm or a tissue (not your hands).
- Put your used tissues in a bin straight away and then wash your hands.
- Try not to touch your mouth or face.
- Don't hold hands with others
- Wash your hands often with soap and water including before and after going to the toilet.
- If you are sick or don't feel well, tell your teacher.

HELP STOP THE SPREAD COVID-19 AND STAY HEALTHY

We ask for all our parents and students to follow the guidelines below to enable us to provide the safest possible environment during the COVID-19 pandemic. We will constantly monitor the situation and continue to adopt VIC Health Department and Australian Government recommendations as they are presented.

Arrival and Departure

- Students' arrival and departure protocols will continue as they have been for the past terms using the designated driveway in front of the campus. Staff will be on hand to monitor this situation carefully. Please drive with the utmost caution and care when on campus.
- There will be restrictions on access to the college for anyone other than the college staff and students. Parents are to please contact the college by phone or email as required.
- Staff and parents are to observe physical distancing measures by not congregating in areas inside or around the campus. Adults must keep 1.5m away from other adults.
- Due to the limited capacity in each class, attending another class to make up the missed class will not be allowed.

Hygiene Arrangements

- The cleaning of classrooms and shared spaces has increased and will continue.
- All classrooms are equipped with hand sanitising stations. Students will be continually reminded of the need to wash and sanitise their hands throughout the day.
- Prominent signage across the campus in relation to COVID-19 that covers hand washing, personal hygiene, cough etiquette and social distancing.
- Students and teachers will largely remain in the same classrooms where possible.
- Students must not share food, drinks, water and stationery. Bring your own drink bottle.

Management of an unwell student

- Students experiencing symptoms, such as fever, cough or sore throat, will be isolated in an appropriate space with supervision and collected by a parent/carer as soon as possible.
- A medical certificate is not required to return to the college after a period of illness, however students should not return until symptoms resolve.
- If a student spreads droplet by sneezing, coughing or vomiting, surfaces will be immediately cleaned with disinfectant wipes (and using gloves).

Response protocols for COVID-19 cases

- Where there is a case of COVID-19 in the college, parents and students will be notified for the contact tracing process and to have the college site thoroughly cleaned.
- Information about the operational status of the college will be notified using the text message, email and our websites.
- During this period, online learning option will be made available through the Cyberschool or another website to enable students to do the makeup lesson at home.
- Parents and students will be notified when the college is ready to resume onsite learning.