

PRE-UNI NEW COLLEGE

Burwood Office: 279 – 281 Burwood Hwy Burwood East VIC 3151 PH: 8838 2990
Email: admin@newcollegevic.com.au Homepage: newcollegevic.com.au

Pre-Uni New College will remain a Video Conference Class (remote-control learning) in Term 4 unless we are allowed to have students at our educational centre by the government. Term 4 course commences **Friday, 2nd October 2020**.

Year 1 Term 4 course has been structured to accommodate the academic standards expected of students in Term 4 at Pre-Uni New College.

In addition to having the advantage of getting ahead, we will put more focus on improving general ability skill as well as reading comprehension and numeracy skills for their future exams.

Year 1 Term 4 Timetable and Class Location

Course	Session	Class Time	Class Location
EMG Course	Saturday MC	9:00am – 12:30pm	Burwood
	Friday	4:30pm – 8:00pm	Burwood
Self-Study	Wed/Thur	4:30pm – 7:30pm	Burwood

- **Please note that the class locations above may be subject to change depending on the number of students enrolled in Term 4.**
- **Make-Up Lesson Policy (Not at the Stage 4)**
A student can come for a make-up lesson for a maximum of TWO TIMES per term with prior booking. Due to the limited capacity in each class, we do not guarantee your make-up class if you turn up without booking.
- **Self-Study Class (for WEMG students) (Not at the Stage 4)**
Students are welcome to come to our Self-Study class where our tutors are there to help them with their work. Classes are held on Wednesday and Thursday 4:30pm – 7:30pm at the Burwood Office. **BOOKING IS ESSENTIAL.**



SINCE 1992

What's On

September 12, 5pm

Term 4 Full Term Early Bird Discount Offer ends.

October 3

Term 4 begins.
Term 4 Sibling Discount Offer ends.

October 3

Term 4 Full Term Enrolment Discount Offer ends.

November 28 – December 2

Term 4 tests period.

December 12

Term 4 WEMG ends.

Don't have your own Cyberschool account yet?

Go to the Cyberschool website and register for its online services including:

- EMG Module Answers
- Special Online Quiz
- Term Test Review

Please note that all Cyberschool online services are available during normal term course period only.

Year 1 EMG Course

Year 1 EMG course is designed to provide an advanced curriculum and involves a significant commitment to the module of work in English, Mathematics and general ability.

In addition to having the advantage of getting ahead, EMG course will enable students to build a solid foundation for the future exam – NAPLAN, Scholarship Test etc.

- **English** lesson will focus on reading skills and practising reading comprehension & multiple-choice questions.
- **Mathematics** lesson is the essential tuition for students to thoroughly understand mathematical theories, principles and formulas to solve problems.
- **General Ability** lesson will cover basic concepts of verbal reasoning skills.



Year 1 Term 4 EMG Course – Class Timetable

Course Name	Session	Class Time	Class Location
EMG Course	Saturday MC	9:00am – 12:30pm	Burwood
	Friday	4:30pm – 8:00pm	Burwood

Please note that the above class times and locations may be subject to change depending on the number of students enrolled in Term 4.

Year 1 Term 4 EMG Course – Fee Schedule

Course Name	Session	Starting Date	Tuition Fee per week	No. of weeks	Material Fee	Course Fee Total	Full Term Early Bird Special Offer* (by 12 th Sep 20)	Full Term Enrolment Offer** (by 3 rd Oct 20)
Year 1 EMG	Saturday	3-Oct	\$ 60	11	\$ 70	\$ 730	\$ 670	\$ 700
	Friday	2-Oct	\$ 60	11	\$ 70	\$ 730	\$ 670	\$ 700

- **Early Bird Discount Offer*** prices are valid for **full** term advance payments by **5pm, 12th Sep 2020**.
- **Full Term Enrolment Offer**** prices are valid for **full** term advance payments by **8pm, 3rd Oct 2020**.
- **Additional 1.02% surcharge** applies to all credit card payments. We only accept VISA and Master Card.

Coronavirus
(COVID-19)

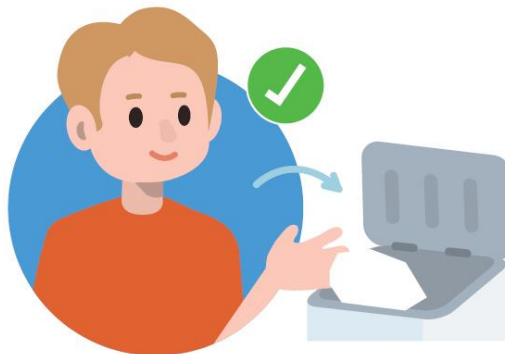
HELP STOP THE SPREAD

If you are sick or don't feel well, **tell your teacher.**

Remember to:



Cover your coughs and sneezes with your arm or a tissue (not your hands).



Put your used tissues in a bin straight away and then wash your hands.



Try not to touch your **mouth or face.**



Don't hold hands with others.



Wash your hands often with soap and water, including before and after eating and after going to the toilet.

HELP
STOP THE
SPREAD
AND STAY HEALTHY



Australian Government

For more information about **Coronavirus (COVID-19)** visit **australia.gov.au**